

Logistics

User Manual

VER 2.16

About the User Manual

This document contains instructions for the **Logistics** function operator of the **SSM Console Client** program.

Please read this manual carefully before using the product for proper use.

- This document explains how to use the product based on its defaults and default screens.
- The information in this manual may vary, depending on the product's software update and our policies, and is subject to change without notice to the user.

About Copyright

©2024 Hanwha Vision Co., Ltd. All rights reserved.

Trademark

Each of trademarks herein is registered. The name of this product and other trademarks mentioned in this manual are the registered trademark of their respective company.

Restriction

Copyright of this document is reserved. Under no circumstances, this document shall be reproduced, distributed or changed, partially or wholly, without formal authorization.

Disclaimer

Hanwha Vision Co., Ltd., has made its best effort to verify the integrity and correctness of the contents in this document, but no formal guarantee shall be provided.

Use of this document and the subsequent results shall be entirely on the user's own responsibility.

Hanwha Vision Co., Ltd., reserves the right to change the content of this document without prior notice.

Table of Contents

About the User Manual 2

About Copyright 2

Learn about the Logistics 5

Operation Cases..... 6

Fulfillment Center 6

Logistics Hub or Sub-terminal 7

Device Configuration 9

Configure Systems..... 10

Barcode Scanner 10

Clustering 10

Federation 10

Learn about Licensing Policies..... 11

Set Logistics 12

Set the Invoice Gateway..... 12

Activate the Invoice Gateway Service 12

Link to the Invoice Gateway 13

Set Camera..... 15

Use the Logistics Function..... 17

Open the Logistics Menu Page 17

Monitor Live Logistics Videos..... 18

Learn about the Configuration of the Monitoring Screen.....18

Monitor in Real-time19

Show Real-time Events20

Preview Event Information.....21

Use the Instant Viewer22

Search the Logistics 23

Learn about the Configuration of the Search Screen.....23

Search Events24

Play Layouts27

Learn about the Logistics

The **SSM Logistics** system can check and store the barcode information received from various devices in real time. It can also search data by barcode and play the videos.

- **Barcode Device**

It can be integrated with a BCR camera of Hanwha Vision or Packing Bridge software.

For more information about installation and configuration of the Packing Bridge software, see the separate user manual.

- **Settings**

After mapping a barcode device to a camera installed at the work place, the device acts as a single camera that provides barcode information.

- **Check Barcode Information in Real Time**

The barcode events can be checked in real time. If you select an event, you can see the item with the barcode in video.

- **Search by Barcode**

In the barcode search result, you can track the motion path of the item by checking the barcode recognition times for each camera.

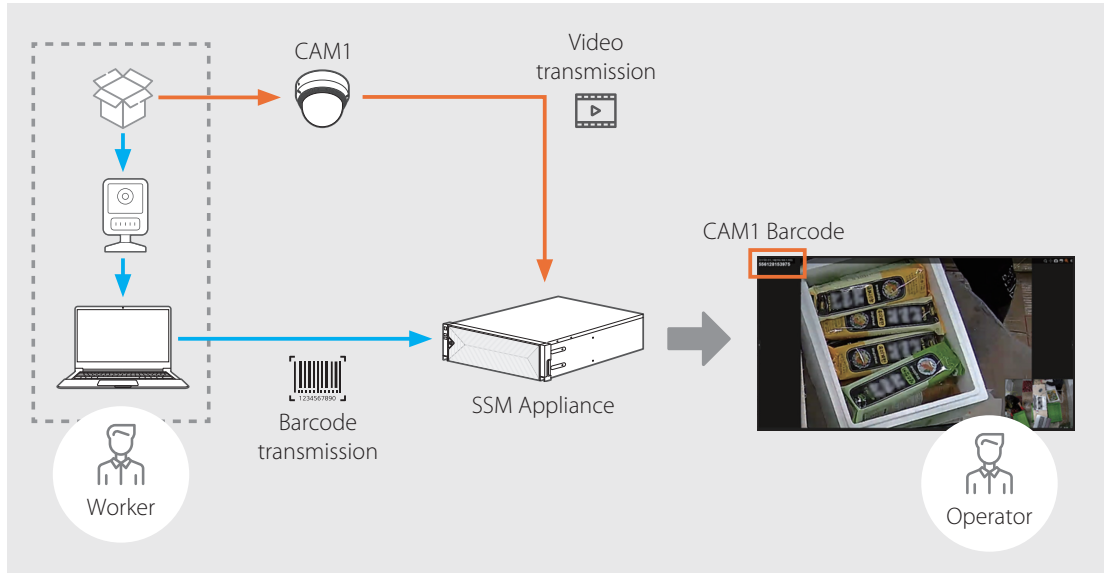
- **Play by Barcode**

By selecting a recorded video from the barcode search result list, you can check the barcode and status of the moving item. By selecting and playing a layout, you can monitor the videos from neighboring cameras and check the motion path of the item.

Operation Cases

Fulfillment Center

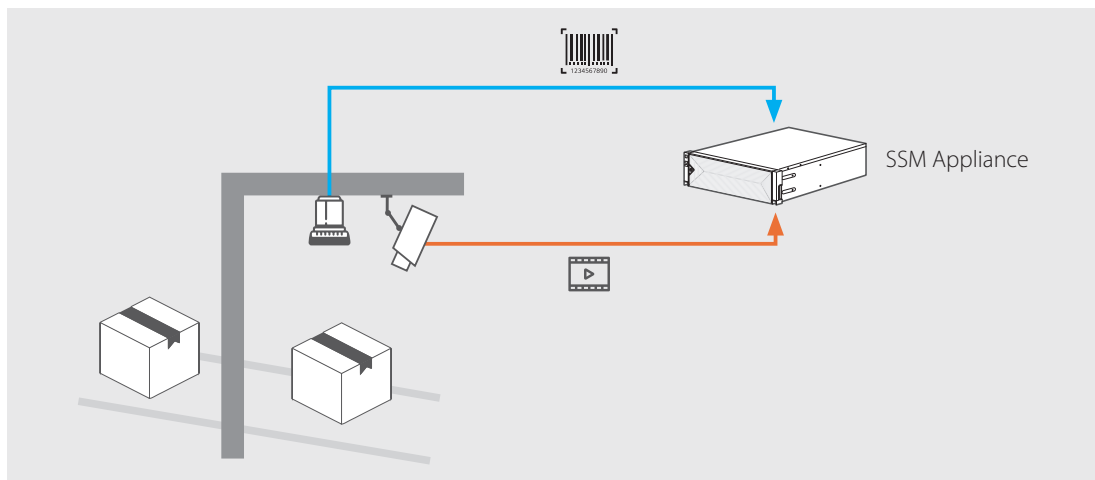
In the event of an incident such as a packing operation error, omission, or damage, the cause of the incident can be identified.



1. Connect a desktop or handy barcode scanner to your laptop's USB port.
2. Scan the item box or barcode.
3. Search for the item by its barcode in the SSM Appliance to check its packing operation video.

Logistics Hub or Sub-terminal

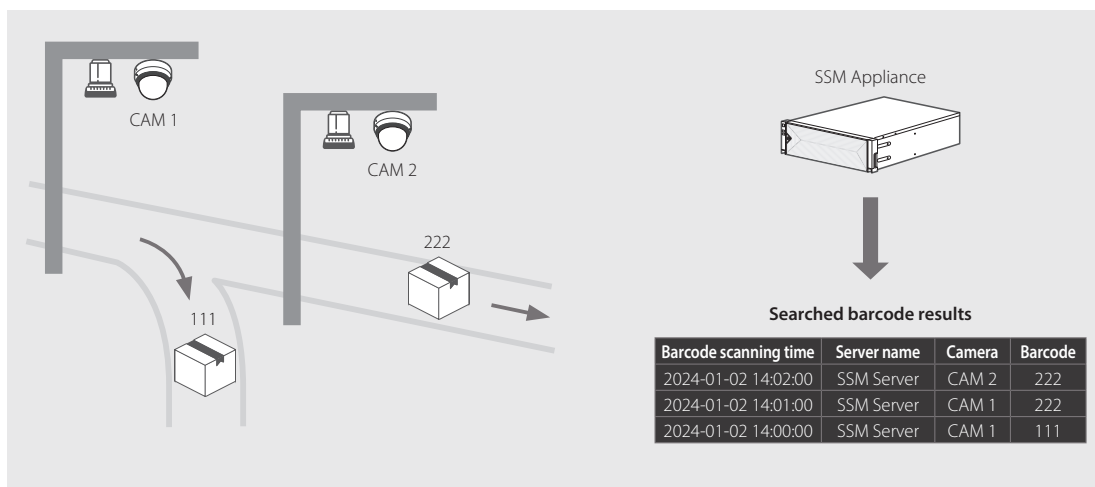
In the event of an accident such as loss, theft or damage to an item, the cause of the accident can be identified.



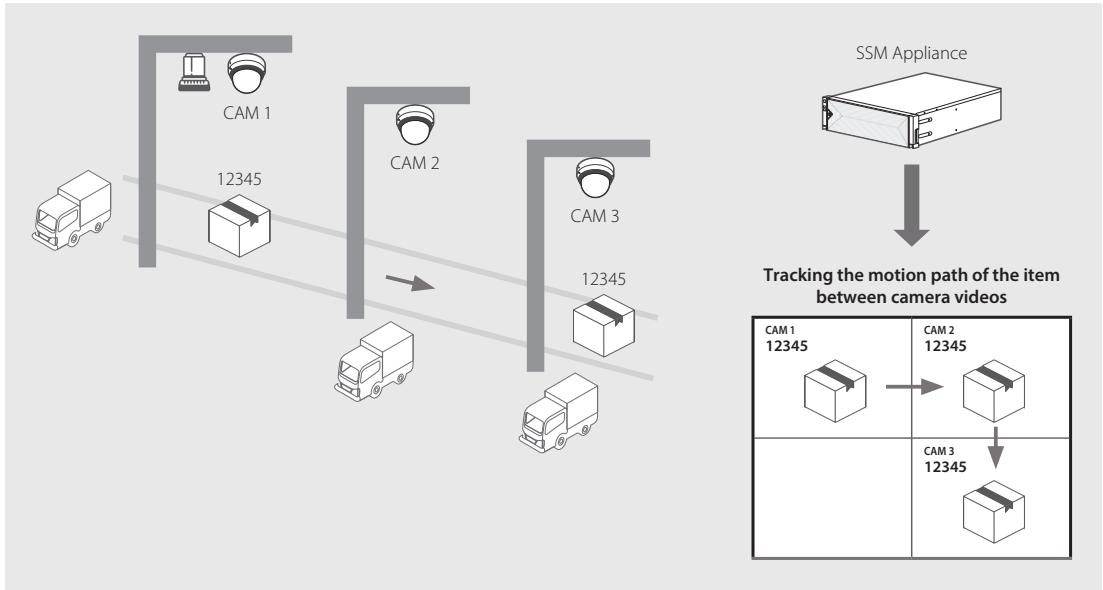
1. Install a barcode device and a camera in an optimal location for barcode recognition.
2. The barcode device scans the barcode of the item while moving on the conveyor belt.
3. Search for the item by barcode in the SSM Appliance.

In the search result, you can track the motion path of the item by checking the barcode scan times for each camera.

- See the following example.



4. From the search results list, select a recorded video to check.
In the video, you can see the barcode and status of the moving item.
5. To monitor videos from neighboring cameras, select a layout from the search results and play it.
The cause of an accident can be identified by tracking the movement route of the item.
 - See the following example.

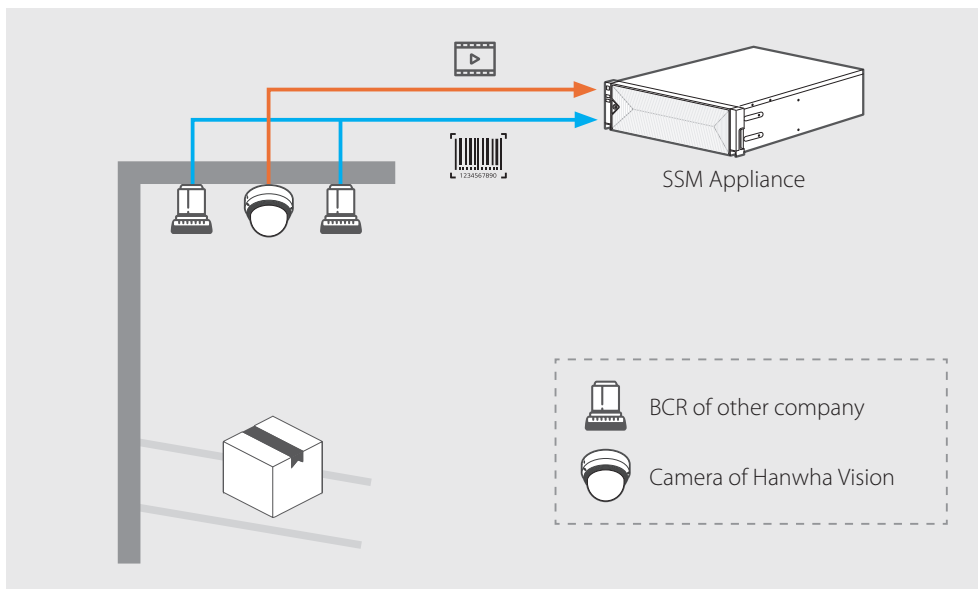


- For more information, see [Play Layouts](#)

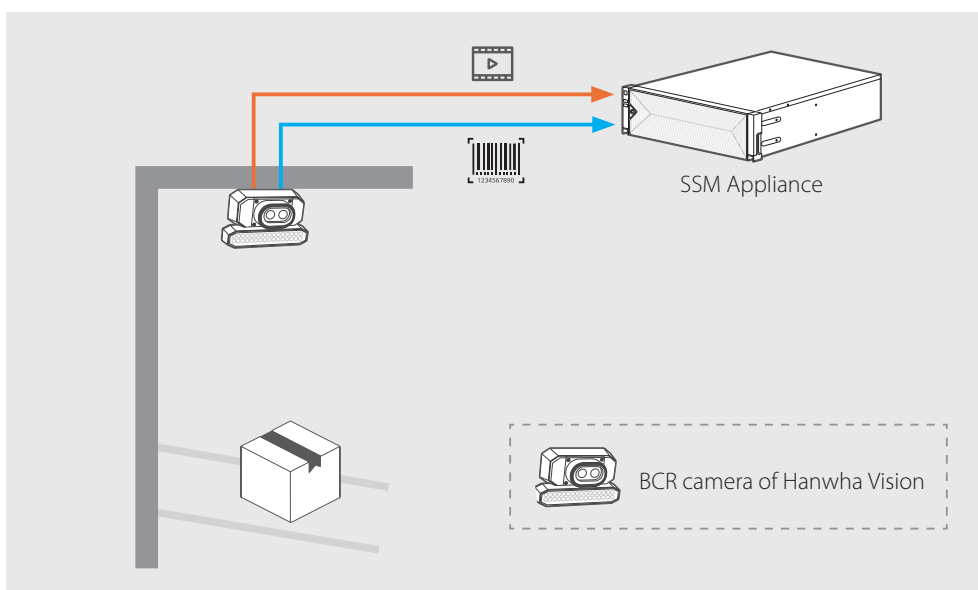
Device Configuration

You can see the videos and barcodes at the same time with a single BCR camera of Hanwha Vision.

- In case of configuration with [2 BCRs of other companies (5M) + 1 camera of Hanwha Vision (8M)]



- In case of configuration with [1 BCR camera (8M) of Hanwha Vision]



Configure Systems

The SSM Appliance receives barcode information from various barcode devices. It can be configured with a single SSM Appliance or in a cluster or a federation.

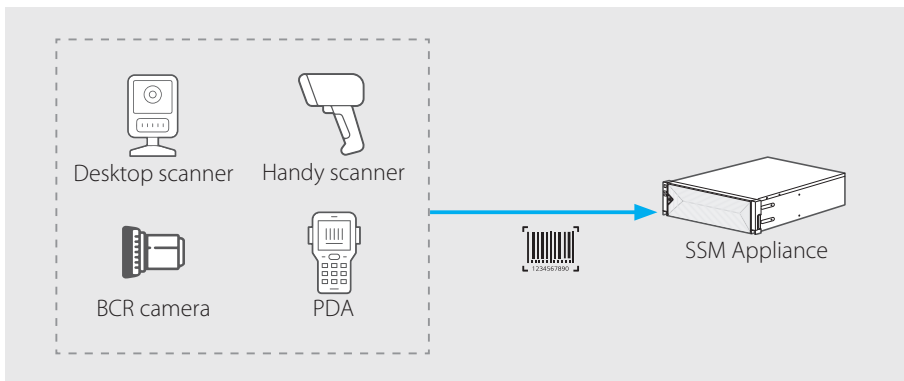


NOTE

Check the number of SSM Appliances operated by the site and whether or not the clustering function is used, and review the system configuration.

Barcode Scanner

The SSM Appliance receives barcode information by integrating with various barcode devices.



NOTE

- For the barcode scanner, wired LAN or wireless LAN communication is recommended.
- Compatible BCR cameras of other companies
 - Cognex DataMan 370 series
 - Datalogic Matrix 320 series
- For a compatible handy scanner or desktop scanner model, see the user manual of the Packing Bridge software.

Clustering

If you install multiple SSM Appliances within a single site, they can be configured in a cluster. When configuring clustering, enable the Invoice Gateway service on only one SSM Appliance.

Federation

If you need barcode search and video monitoring for multiple sites, you can configure the site in a federation.

- In a parent site, you can search barcodes for the site and sub sites.
- Real-time events in sub sites cannot be seen in the parent site.

Learn about Licensing Policies

Customers who purchased the SSM Appliance can use logistics functions by integrating with the following devices (excluding the PRP series):

- BCR camera of Hanwha Vision
- Packing Bridge software (Bridge License required)

The same logistics functions can be used also in the **SSM Console Client** connected to the SSM Appliance.

However, the logistics functions are not supported when installing the SSM server on a PC.

Bridge License

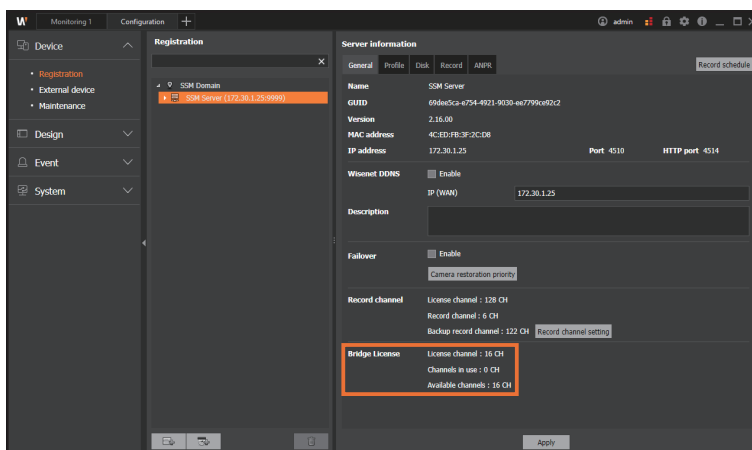
To use the Packing Bridge software together with 3rd-party BCR cameras in **SSM**, apply the Bridge License.

You can use as many license channels as you have purchased.



NOTE

- You can set to integrate with the Packing Bridge as many channels as the Bridge License has. Set **Camera type** to **Barcode** and enter the port number in **Shortcut**. For more information, see [Set Camera](#).
- The Bridge License information can be checked in **Configuration > Device > Registration > Server information**.



Set Logistics


To use the **SSM Logistics** system, activate the Invoice Gateway service and barcode linking function, and set the camera type and shortcut number.

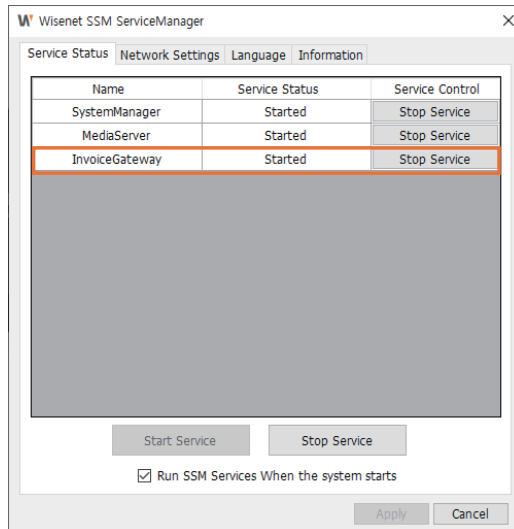
Set the Invoice Gateway

To use the **SSM Logistics** system, activate the Invoice Gateway service and barcode linking function.

1. Activate the Invoice Gateway Service

1. Run the **Wisenet SSM ServiceManager** program.

- Double-click  on the desktop.
Or you can run the **ServiceManager.exe** file in the folder [C:\Program Files\Wisenet\SSM Server\ServiceManager].
- In the **Service Status** tab, check whether the Invoice Gateway service status is displayed as **Started**.



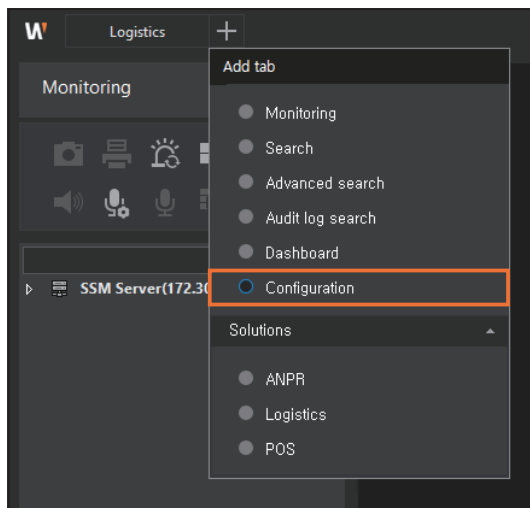
NOTE

If the SSM configuration has been initialized, be sure to start the Invoice Gateway service to check in **Configuration > Device > External device** menu.

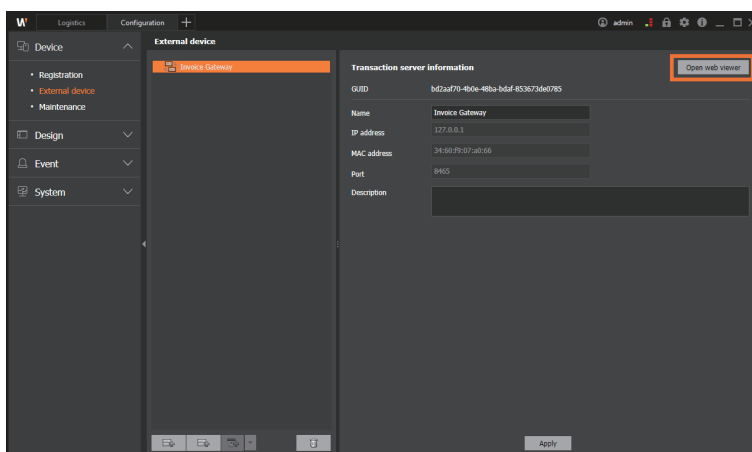
Link to the Invoice Gateway

You can activate the barcode linking function in the **SSM Console Client** program.

1. Run the **SSM Console Client** program.
2. Click the **+** button at the top of the program, and then select **Configuration** in the **Add tab** dialog box.



3. Select **Device > External device** in the menu list.
4. After selecting **Invoice Gateway** from the list of devices, click the **Open web viewer** button.



5. Change the IP, port or desired settings in the web viewer settings window.

☑ Activation

IP:

Port:

MAC:

SSM sync time(sec):

Event discard time(millisecond):

- **SSM sync time (sec):** When camera information such as the type of camera registered in the **SSM Console Client** and the set shortcut number are changed, the changes are synchronized within the set time.
- **Event discard time (millisecond) :** Duplicate barcodes within the set time are not recognized.
- **Apply(Restart):** The changed settings are saved and the Invoice Gateway is restarted.
- **SSM sync :** The settings changed in the **SSM Console Client** are applied immediately.



NOTE

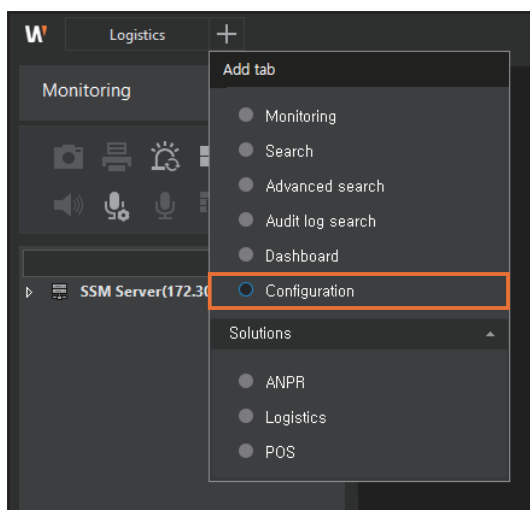
For BCR cameras of Hanwha Vision, SSM information is automatically synchronized without enabling it in the Invoice Gateway.

Set Camera

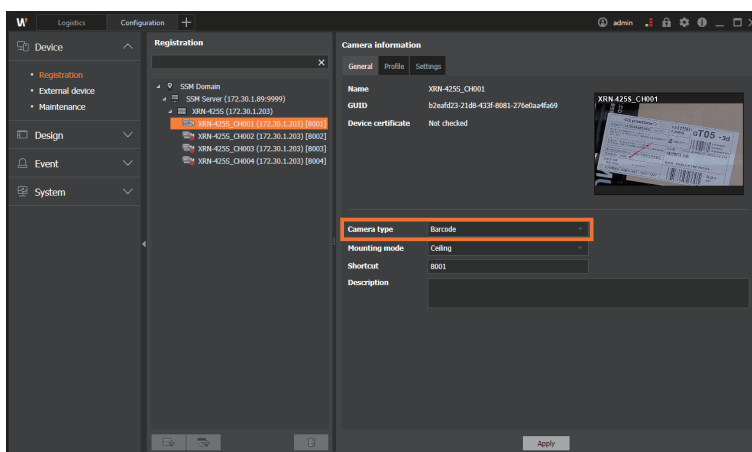
To use the **SSM Logistics** system, set the registered camera type and shortcut number.

When integrating a third-party barcode device other than that of Hanwha Vision, the following settings are required.

1. Run the **SSM Console Client** program.
2. Click the **+** button at the top of the program, and then select **Configuration** in the **Add tab** dialog box.

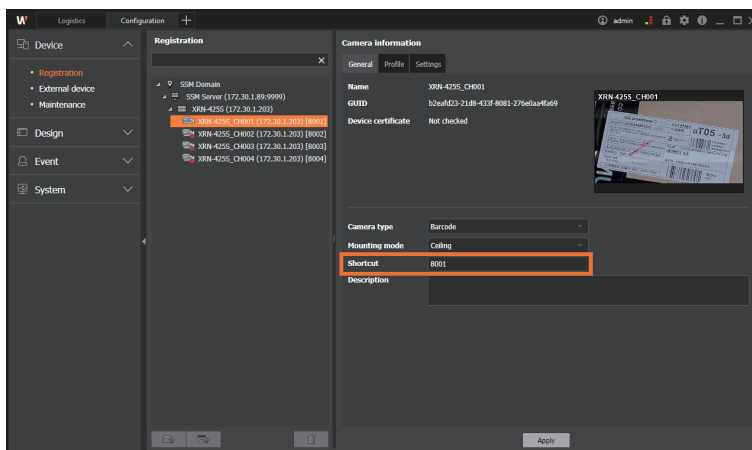


3. Select **Device > Registration** in the menu list.
4. Select camera from the device list.
5. Set the **Camera type** as **Barcode**.



6. Enter the **Shortcut** number.

- You can enter a number within the range of 1024 to 65535 (recommended to use 2000 series).



7. Click the **Apply** button.



NOTE

After changing the settings, check that there are no problems with the shortcut settings. Refresh the Invoice Gateway web page, and if there is no error message regarding port duplication, it is set up normally. If an error message appears, change the corresponding shortcut number, select **Apply (Restart)**, and check whether the error message is gone.

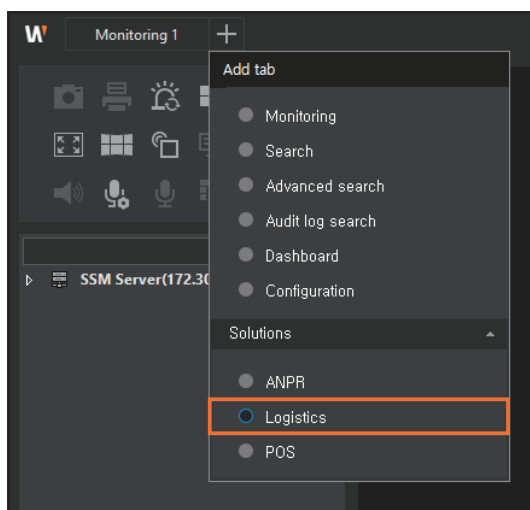
The screenshot shows an 'Activation' dialog box with a checked checkbox. It contains several input fields: IP (127.0.0.1), Port (8465), MAC (00:09:18:6b:5e:88), SSM sync time(sec) (30), and Event discard time(millisecond) (5000). Below the fields are two buttons: 'Apply(Restart)' in yellow and 'SSM sync' in green. At the bottom, a red-bordered box contains the text: 'These ports are duplicated. Please remove duplication and restart service. 7004'.

Use the Logistics Function

You can monitor videos from cameras registered to the SSM Appliance and check events in real-time. You can also search or replay the event log, or export the searched event list as a file.

Open the Logistics Menu Page

Click the **+** button at the top left of the program, and then select **Logistics** in the **Add tab** dialog box.



Monitor Live Logistics Videos

You can monitor videos from cameras registered to the SSM Appliance and check events in real-time.

Learn about the Configuration of the Monitoring Screen

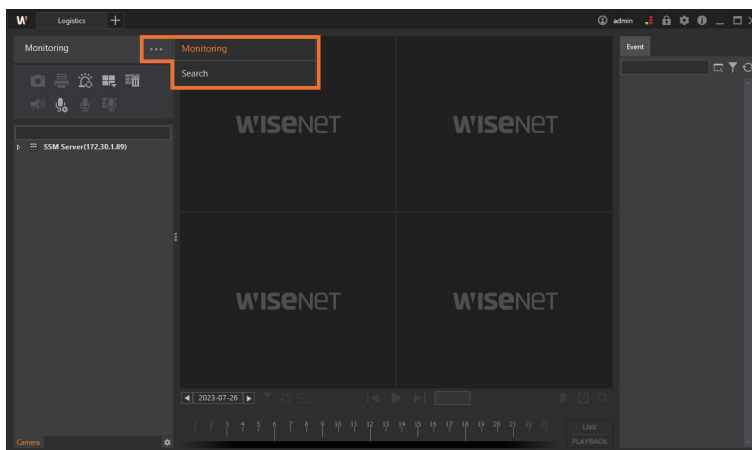
The Monitoring menu screen is configured as follows:



No.	Screen configuration	Detailed description on functions
①	Menu display	<ul style="list-style-type: none"> You can check the name of the menu currently selected. You can select the Logistics menu by clicking the ... button.
②	Function buttons	You can control the camera videos and audio, and split the video screens.
③	Device tree	You can see the list of registered cameras.
④	Video window	You can check the live video from the selected camera or play an event video.
⑤	Event list	<ul style="list-style-type: none"> You can view, delete or search the real-time event list. When a new event occurs, a list of events is added in order. : You can see the live or event video when the instant viewer is enabled. The setup mode is maintained even if the SSM Console Client program is restarted. : Filtering can be set to display only the barcode events of the desired camera. : You can remove all the event lists displayed in the Real-time events window.
⑥	Timeline	You can check the section with the video and set the time section to search.

Monitor in Real-time

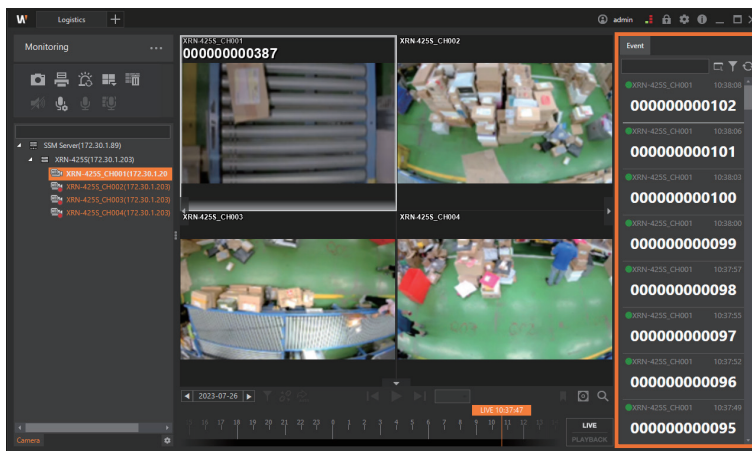
1. Open the **Logistics** menu page.
2. Click the **☰** button and select **Monitoring**.



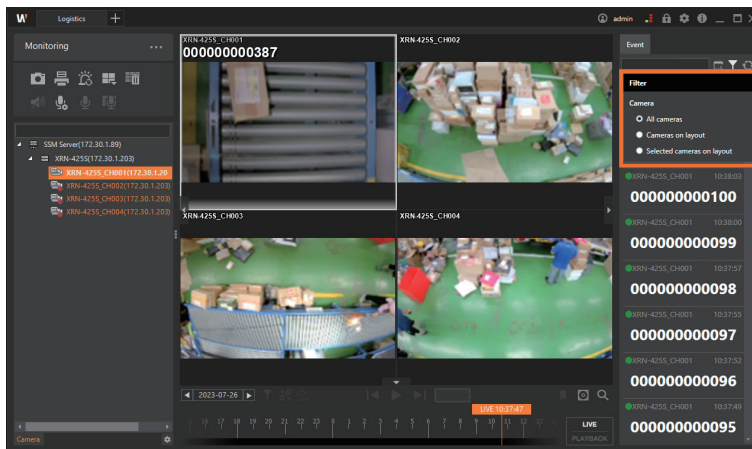
3. Double-click the desired camera from the camera tree on the **Camera** tab.
Or select the desired camera from the **Camera** tab and drag it onto a tile of the video window.
 - You can check the real-time video of the selected camera.
 - The camera tree displays cameras set only with the Barcode function.

Show Real-time Events

1. Open the **Logistics** menu page.
2. Click the **Monitoring** button and select **Monitoring**.
3. Double-click the desired camera from the camera tree on the **Camera** tab.
Or select the desired camera from the **Camera** tab and drag it onto a tile of the video window.
4. Check live events in the video window of the selected camera.
 - When an event occurs, the event information is displayed on the video window and real-time event window.



5. Click the **Filter** button in the real-time event window and select the desired search condition.



- **All cameras:** Display barcode events from all registered camera.
- **Cameras on layout:** Display only barcode events from all cameras in the layout that is being monitored.
- **Selected cameras on layout:** Display only the events of cameras selected from the layout that is being monitored.
- Click the **Reset** button to reset the event list.

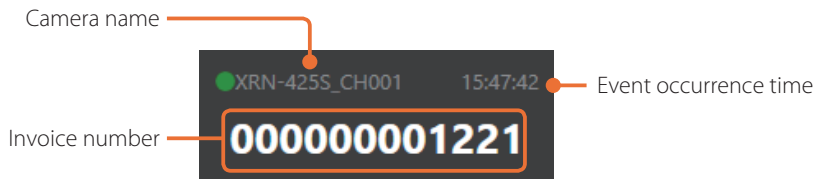
**NOTE**

Up to 3,000 events are displayed on the list.

Preview Event Information

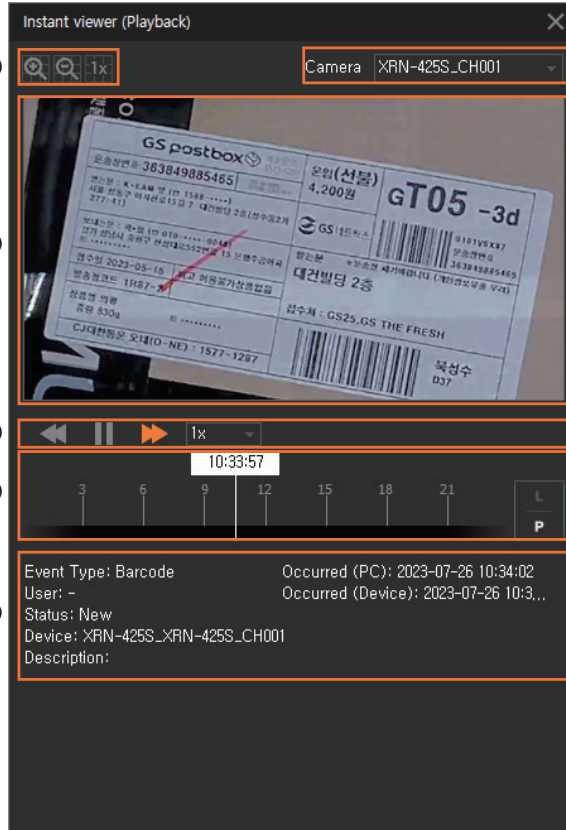
When an event occurs, you can preview the information of the event in the Real-time events window.

If you want to check detailed information about an event, double-click on the event to launch the **Instant viewer**.



Use the Instant Viewer

When the Instant Viewer is executed, the video at the time of the event is played. You can find the detailed information regarding events such as camera name, event type, occurred time, etc. in the Instant viewer.



No.	Screen configuration	Detailed description on functions
1	Digital zoom	You can zoom in/out on the video on the tile with digital zoom.
2	Camera name	You can check the name of the camera where the event occurred.
3	Video tile	You can play the recorded video of an event that occurred or check the real-time videos from the camera.
4	Control playback speed	You can control the playback speed when playing the recorded videos. <ul style="list-style-type: none"> For more information, see SSM Console Client User Manual.
5	Timeline	You can control the timeline when you play the recorded video of an event that occurred. <ul style="list-style-type: none"> For more information, see SSM Console Client User Manual.
6	Event details	You can see the detailed information about the event.

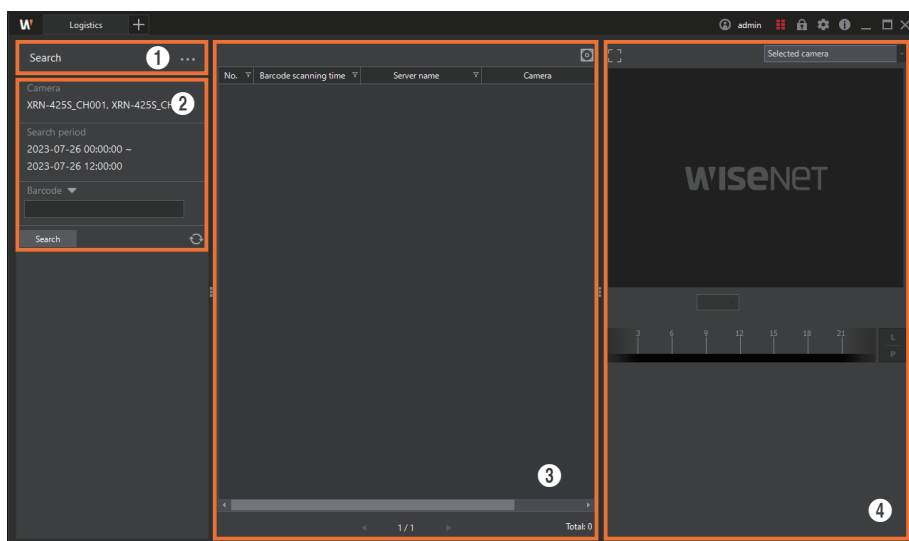
Search the Logistics




You can search the recorded videos stored in the SSM Appliance by camera, date or item invoice number and play them.

You can also export the search results as a file.

Learn about the Configuration of the Search Screen

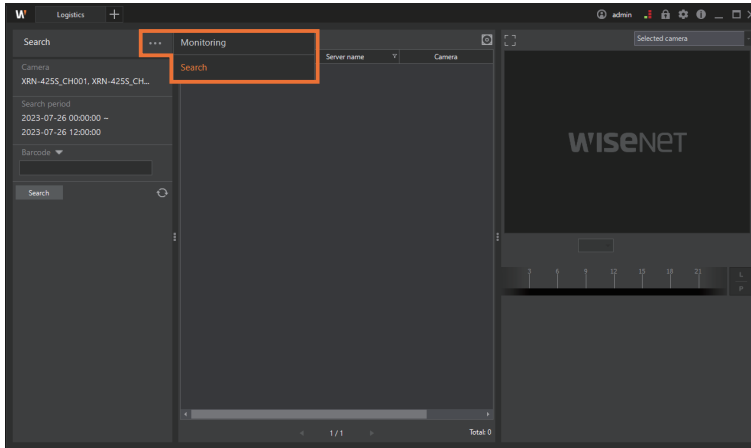
The Search screen is configured as follows:



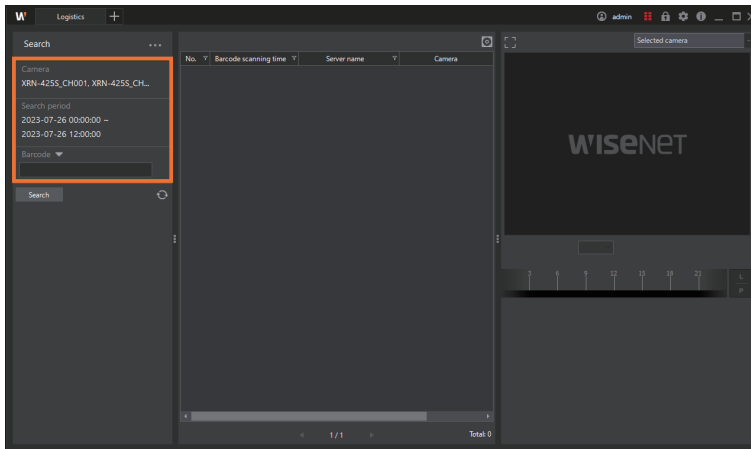
No.	Screen configuration	Detailed description on functions
①	Menu display	<ul style="list-style-type: none"> You can check the name of the menu currently selected. You can select the Logistics menu by clicking the  button.
②	Search options	Camera, date or invoice number can be set as search conditions. <ul style="list-style-type: none"> : You can cancel the selected search conditions and set a new search conditions.
③	Search results	You can check the search results. <ul style="list-style-type: none"> : You can export the searched event log as a file. You can change the order of columns. The setting values are maintained even if the SSM Console Client program restarts.
④	Event details	You can check the event video selected from the event list.


Search Events

1. Open the **Logistics** menu page.
2. Click the **...** button and select **Search**.

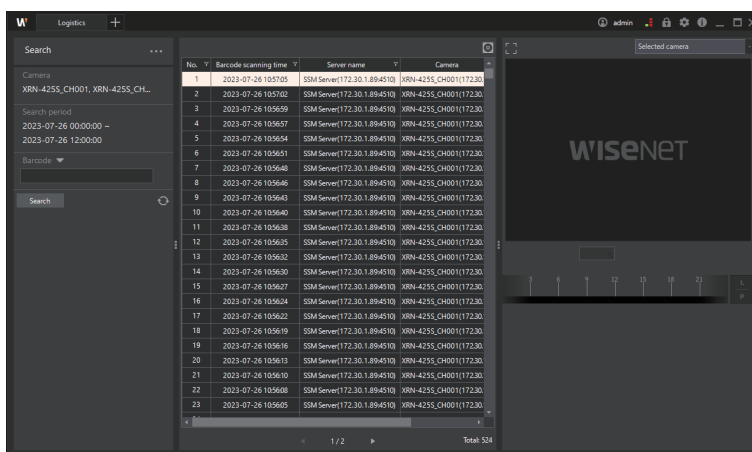



3. Enter the camera, date, time range, or barcode number to search.

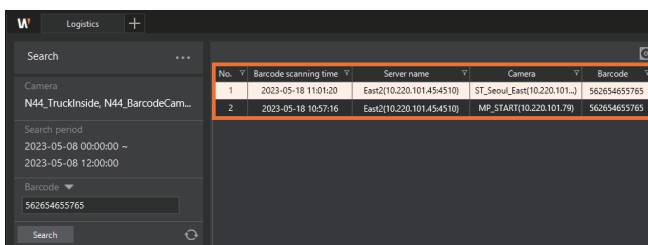


- Click the  button to cancel the selected search condition and select a new search condition.

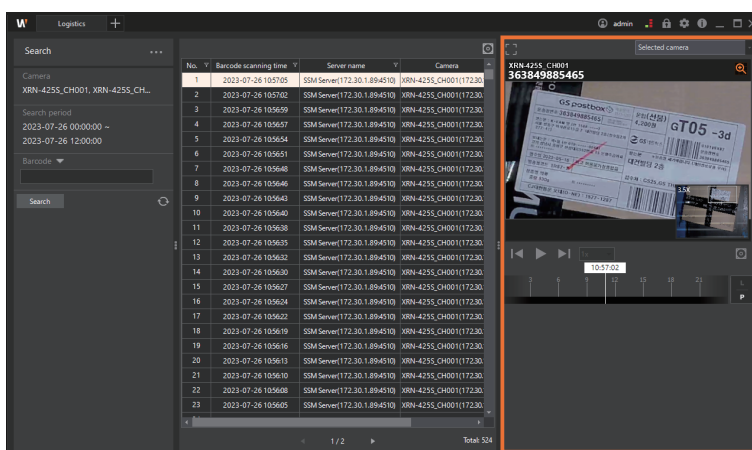
- Click the **Search** button. The search results will appear on the event list.







- Click the  button to export the searched event list as a file.
- If you searched by invoice number, you can check the movement route of the item in the results list.



- If you double-click the event you want to check in the Event list, then the video at the time of the event occurrence is played in the event details.

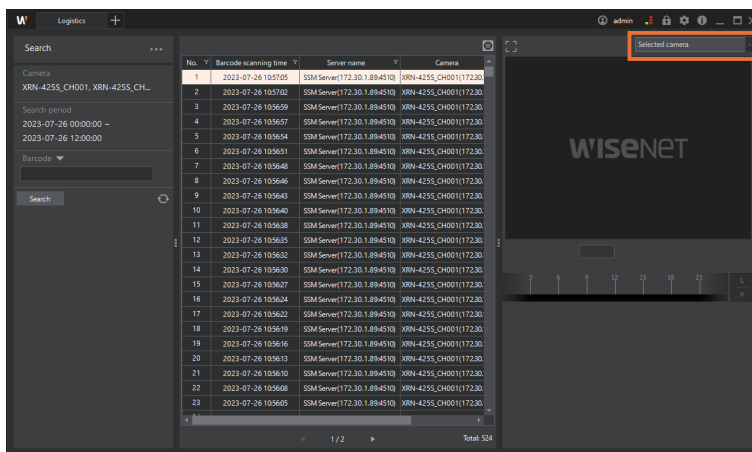


- When the barcode is recognized, the video automatically stops and the recognized invoice number is displayed on the screen.
When multiple barcodes are simultaneously recognized, all the invoice numbers are displayed, too.
- : You can move between frames to find the desired part of the video.
- : You can zoom in the desired part of the video using digital zoom.
- : You can zoom in the video area.
- : You can export the searched event video as a file.

Play Layouts

During event video playback, videos from other cameras at the time of the event can be played simultaneously. You can use this feature to track the movement route of lost or stolen items.

- After searching for an event, select the desired layout from the drop-down list of the **Selected camera**.
 - Layouts require presetting, and you can set the same name for the camera and the layout.



- Double-click the event you want to play in the event list. Videos from other cameras at the time of the selected event are played simultaneously.



- / : You can move between frames to check the movement route of the item.
- You can change to single screen by double-clicking the desired video in Split mode. If you double-click the video in single screen, it will change to split mode.

