

## Guideline to Certification

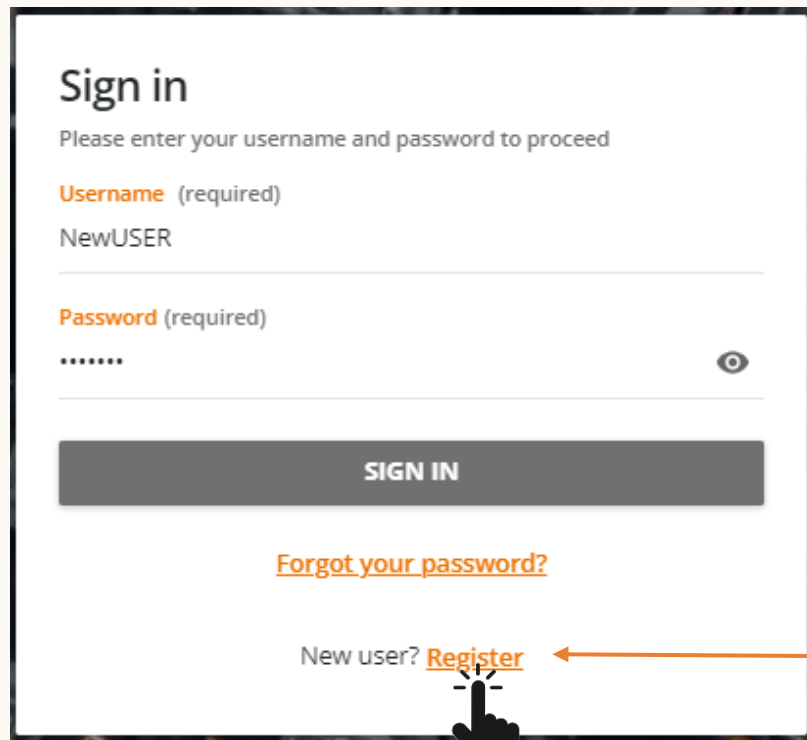
# Hanwha Vision Learning Center

Find the learning you need and become an expert!

## Step 1

Sign up for Hanwha Learning for Certification @ <https://learn.hanwhavision.com/>

( this is new portal, new sign up is required if you have used before 2024)



**Sign in**  
Please enter your username and password to proceed

**Username** (required)  
NewUSER

**Password** (required)  
.....

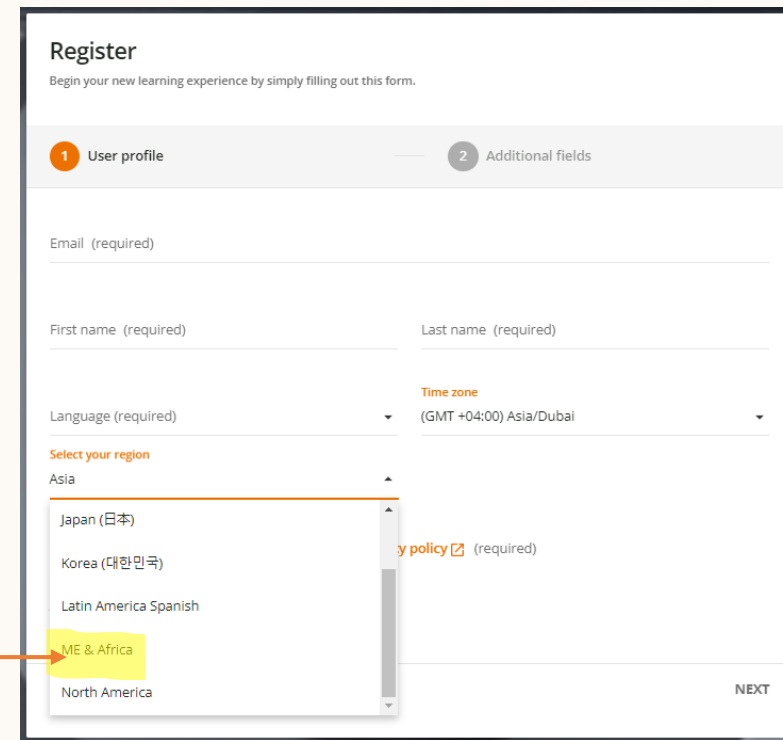
**SIGN IN**

[Forgot your password?](#)

New user? [Register](#)

A hand cursor icon is pointing to the Register link.

Sign up



**Register**  
Begin your new learning experience by simply filling out this form.

**1** User profile **2** Additional fields

Email (required)

First name (required) Last name (required)

Language (required) Time zone (GMT +04:00) Asia/Dubai

Select your region

- Asia
  - Japan (日本)
  - Korea (대한민국)
  - Latin America Spanish
  - ME & Africa**
  - North America

Privacy policy (required)

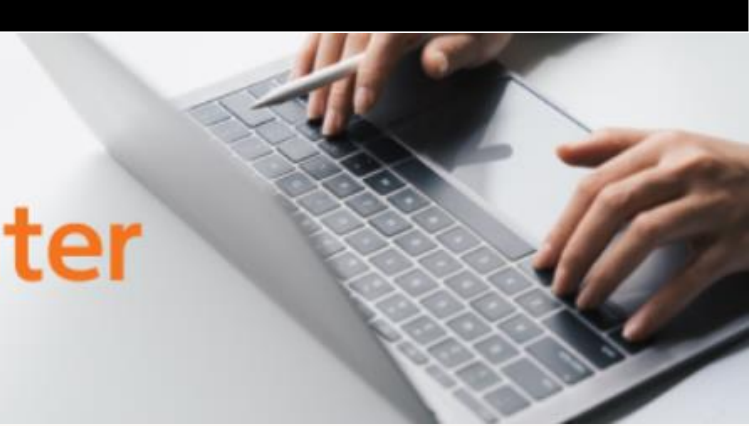
**NEXT**

Select ME & Africa

## Guideline to Certification

# Hanwha Vision Learning Center

Find the learning you need and become an expert!



Step 2 ( Complete the full Pre-sales or Post-Sales as per your role or both)

Sign up for Hanwha Learning for Certification @ <https://learn.hanwhavision.com/>



### Pre-Sales

#### Camera

- [HV Network Camera Line up ID: E-5VNQVM](#)
- [Wisenet Toolbox ID: E-D19WP1](#)

#### NVR

- [HV NVR Line UP ID: E-XVDPV2](#)

#### SSM VMS(All Regions)

- [SSM VMS and Viewer ID: E-G0381J](#)

#### Supplementary

- [Camera Specification ID: E-O06RVJ](#)
- [Recorder Specification ID: E-N05ZVP](#)

### Post-Sales



#### UAE - Only

[Classroom Hands-on session is mandatory for UAE SI Partners](#)

- [Session is Held Twice Monthly : English](#) | [Click here for the Dates \(Updated on monthly basis\)](#)

#### Other Regions - MEA

##### Camera

- [Network Camera Basic ID: E-Z1G903](#)
- [Network Camera Advanced ID: E-GVZ808](#)

##### NVR

- [NVR Basic ID: E-POY200](#)
- [NVR Advanced ID: E-YVML06](#)

##### Wave VMS - Africa Only

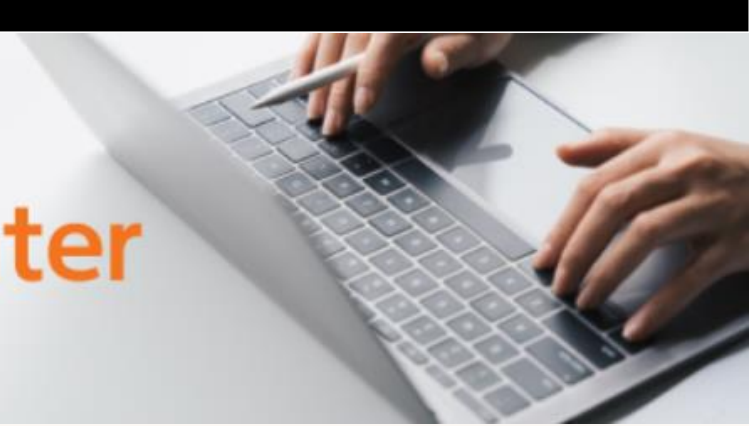
- [Wave VMS ID: E-E1LZV4](#)
- [Wave VMS Advanced ID: E-E0JMMO](#)

##### SSM VMS

- [SSM VMS Basic Course - ID: E-POWZ0J](#)
- [SSM VMS Advanced ID: E-6VX251](#)

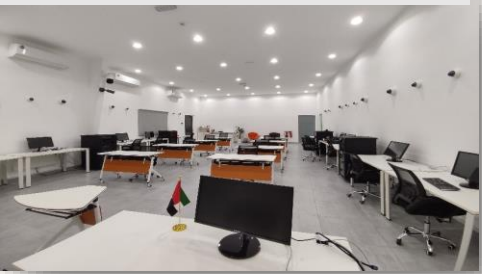
# Hanwha Vision Learning Center

Find the learning you need and become an expert!



UAE – Only

Class Room Sessions



Step 1

Register for the course : **Hanwha Vision Certified - Video Professional: eLearning + hands-on combination course (with SSM)**  
[Course Link](#)

Step 2

Completing the pre-course modules online and then register for the offline Instructor Led Session.  
Select Dubai Location for the Training Dates

Step 3

Attend the Offline Session  
Complete the Exam and Get Certified

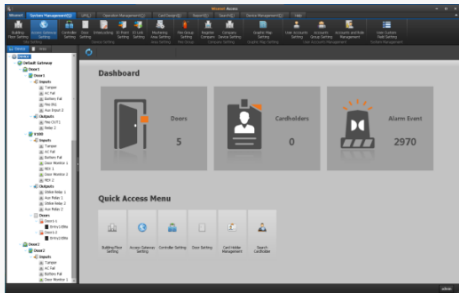
## Guideline to Certification

# Hanwha Vision Learning Center

Find the learning you need and become an expert!

## Other Sessions

### Access Control



- [Click here for the Live Webinar Dates](#)

### New Products Updates



- [Twice Monthly – English and Arabic](#)
- [Click here for the Live Webinar Dates](#)

## E-Learning - Fundamentals

### New Joiners



- [Camera Fundamental ID: E-KVOW0J](#)
- [Video Fundamental ID: E-D19PVG](#)
- [Recorder Fundamentals ID: E-P08J03](#)
- [Viewer and VMS fundamental ID: E-GVP31J](#)

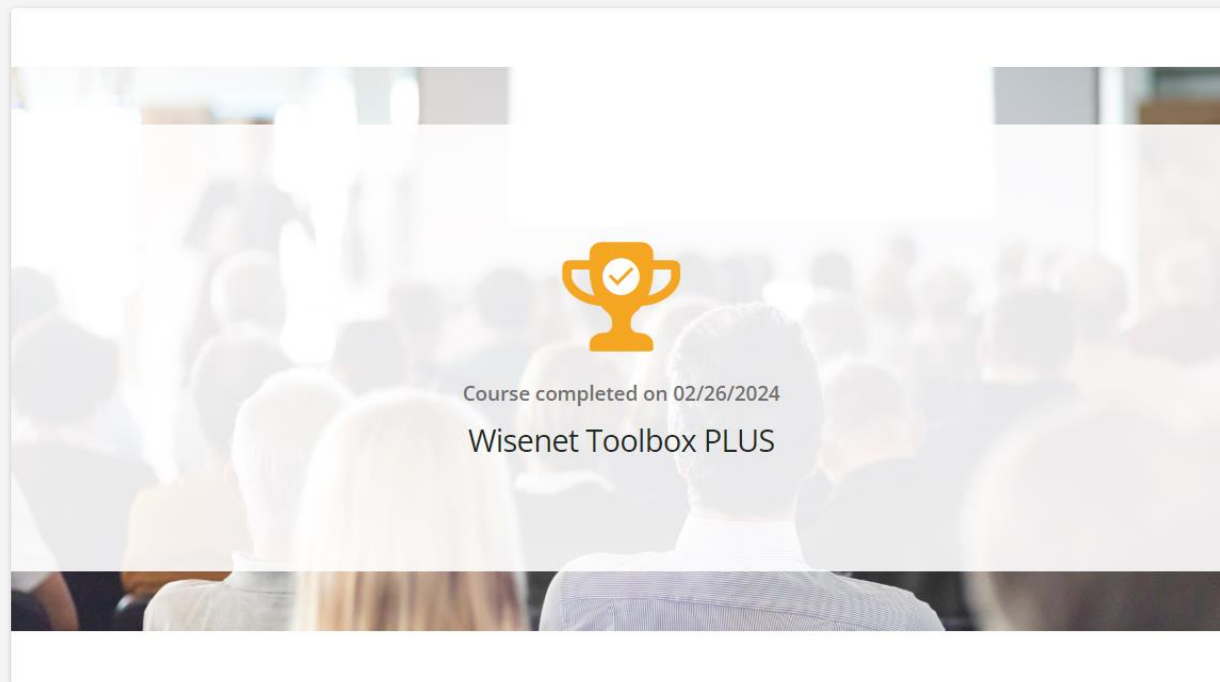
## Guideline to Certification

# Hanwha Vision Learning Center

Find the learning you need and become an expert!

## Step 3

Download your Certificate : Validity 2 Years



A notification card with a background image of a classroom. In the center, there is a gold trophy icon with a checkmark inside. Below the icon, the text reads: "Course completed on 02/26/2024" and "Wisenet Toolbox PLUS".

Click [Start Learning Now](#) to begin your course

### Renewable certification

**i** This course is eligible to renew the certification: eLearning Certification. The certification expires on: 02/26/2026.

**RENEW CERTIFICATION**

### Wisenet Toolbox PLUS

ID: E-D19WP1



1 / 1 lessons completed

**DOWNLOAD YOUR CERTIFICATE**



**Wisenet Toolbox PLUS**  
eLearning