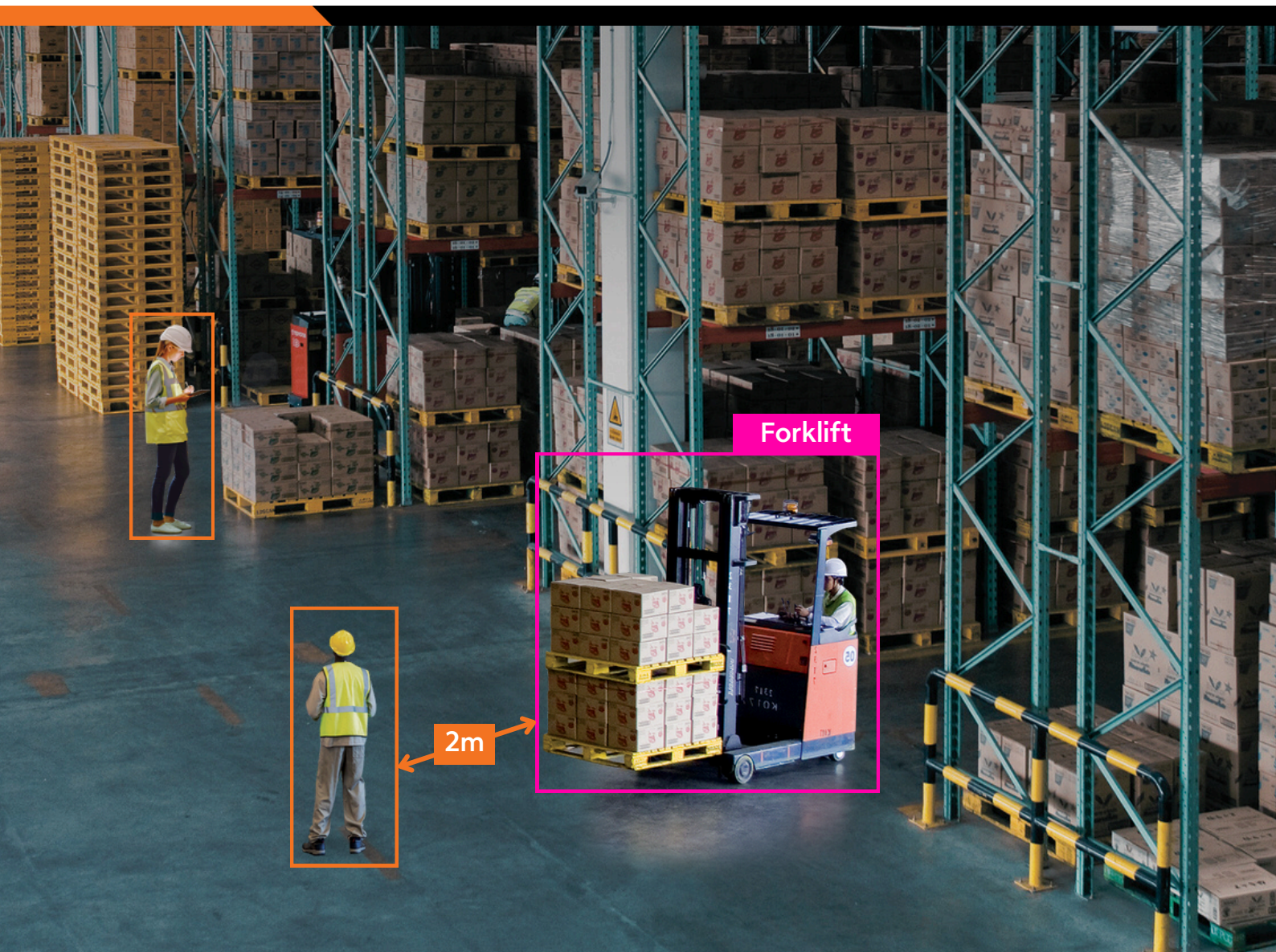


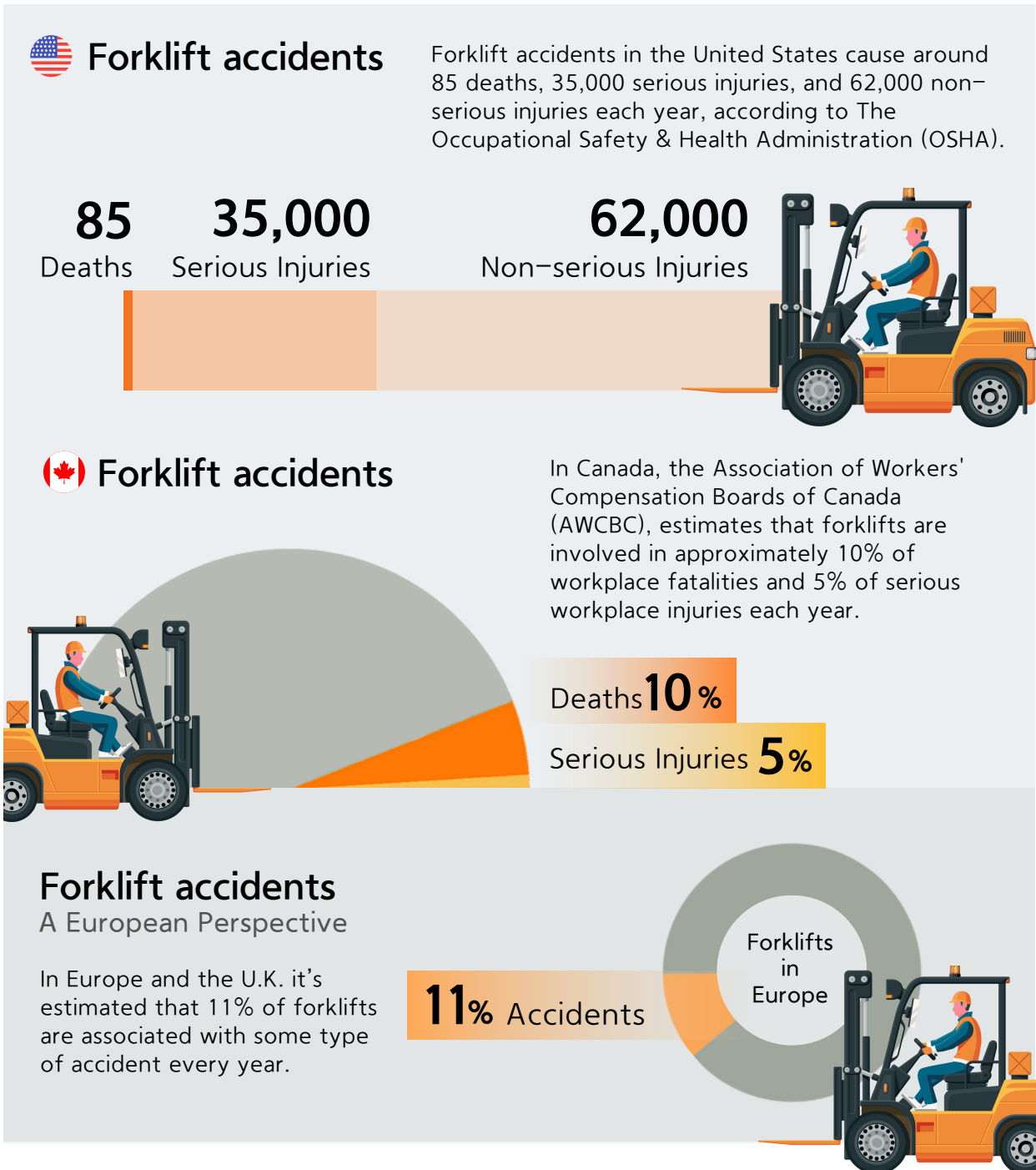
General Manufacturing

# How Hanwha Vision's AI-enabled Smart Factory Solution Can Make Forklift Operations Safer



Improving forklift safety is one of the best ways that companies can save lives, protect employees, minimize compliance infractions, and reduce costly legal expenses.

The problems that improper or unsafe forklift operations cause are extensive, no matter where you are in the world. A few examples:



Beyond these stats, think of the extensive recovery time required from forklift-related injuries, the many injury-lost days for employees, and potential legal costs.

While no single solution or amount of training can prevent every cause or instance of improper forklift operation, implementing Hanwha Vision's new AI-enabled [Smart Factory](#) solution can go a long way toward reducing dangerous forklift incidents, and creating a safer and more productive workplace environment.

## Intelligent Video Surveillance

Recently, Hanwha Vision, a leader in global video surveillance technology, released its new Smart Factory solution set. It combines the power of its innovative surveillance cameras with advanced AI analytics.

Cameras equipped with the AI-enabled Smart Factory application monitor every part of a forklift's operations. They provide various alarms that immediately alert operators and security professionals when encountering hazardous environments or unsafe driving conditions are in progress.

For example, if a driver is going over the pre-designated safe forklift speed limits, he/she will receive an instant notification and warning to slow down. These alerts are also logged and sent to security professionals who are monitoring the factory or plant floor either onsite, or from a centralized remote location enabling security and safety professionals to have immediate, real-time access to this information.

If a forklift is parked in the wrong location, similar alarms will be triggered. The Smart Factory solution also offers valuable proximity detection notifications.

This ensures that there is always a safe distance between a person and a forklift, between multiple forklifts, or from a forklift to other related equipment or structures, like columned shelving stacks.

## Closing

Along with enhancing the safety of forklift operations, the AI-enabled Hanwha Vision Smart Factory solution can do so much more, including detecting slip and falls, ensuring entrances and exits are free from hazards and managed in accordance with OSHA standards.

We look forward to discussing those exceptional capabilities in an upcoming blog.

Speak to a Hanwha Vision manufacturing industry expert to learn more about our Smart Factory Solution.

